



www.forestprint.com.au

2 Sheffield Way Keysborough  
VIC 3173 Australia

**Australian**  
SKYPE: ForestPrint

+61 3 8638 3842  
+61 3 8638 3843  
gejing@forestprint.com.au

**What you need to know when submitting artwork**

(Please go to [www.forestprint.com.au](http://www.forestprint.com.au) for more detail)

- All embedded images must not be less than 300dpi.
- All logo and images have to be embedded into the artwork.
- Please make sure all text is correct as we will not alter your artwork and its content.
- Please make sure that your artwork has at least 1mm bleed around all corners.
- All important elements (text, images, logo etc.) have to be placed within the yellow line.
- We use standard CMYK for printing. Using other colour models in your artwork such as RGB and Pantone might cause differentiation or error in the colours on your print product.
- Final print product might only be 85% close to what you see your artwork as on screen in terms of colour. An interval of 15% of colour differentiation is an acceptable standard for the printing industry.



- 1 Edit and lay out text and images
- 2 Create outlines for all text or turn all text to curve
- 3 Save and upload onto [www.forestprint.com.au](http://www.forestprint.com.au) or email to [gejing@forestprint.com.au](mailto:gejing@forestprint.com.au)

# PAPER BAG

Size: 310x110x420mm

Colour: CMYK Printing

**BLEED AREA (866x548mm)**

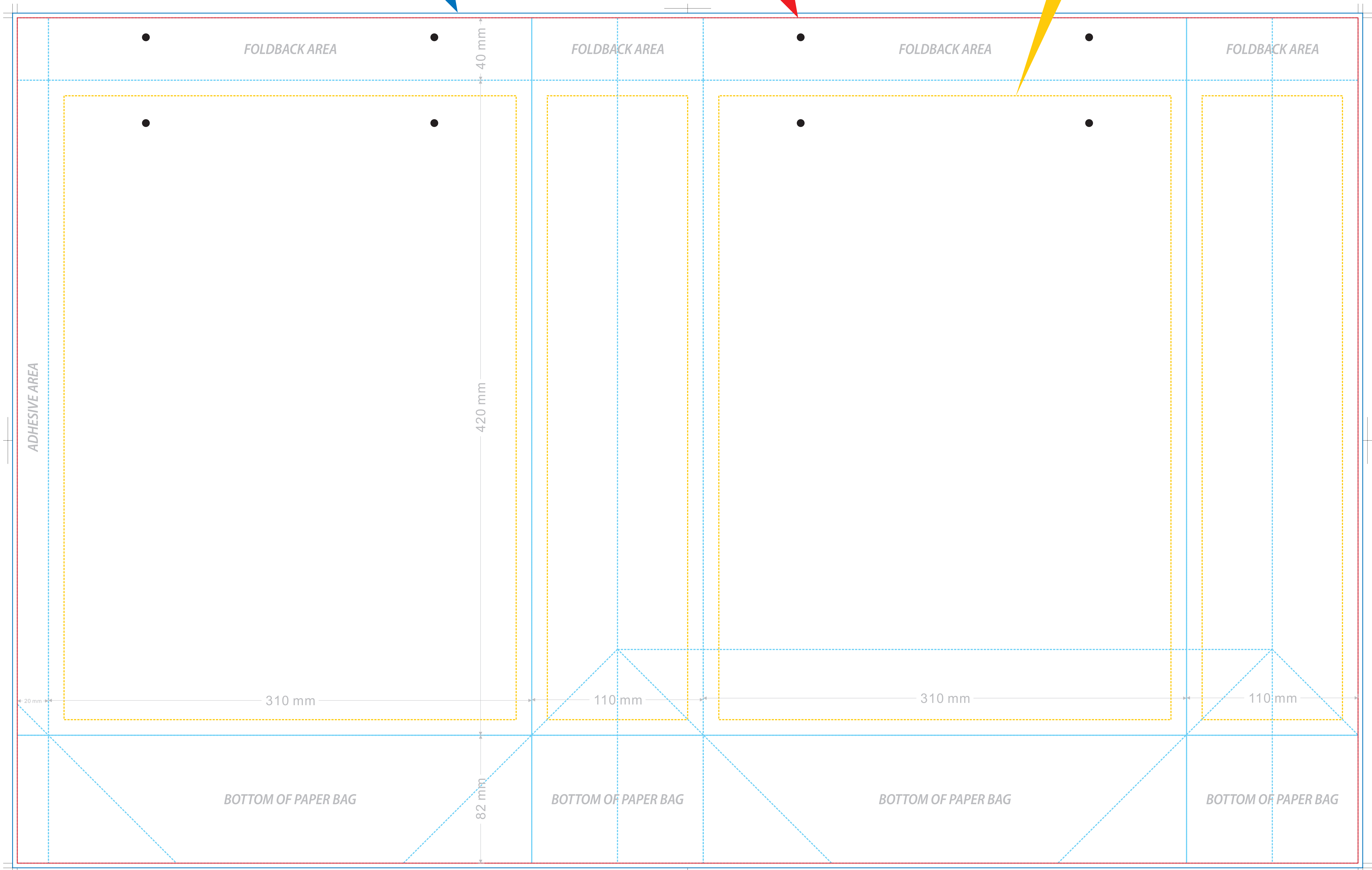
Enlarge background image around four corners to avoid undesirable white borders.

**CROP AREA (860x542mm)**

This will be the cropped size of the print product.

**SAFETY MEASURE**

All important elements (text, images, logo etc.) have to be placed within this area.



FOLDING LINE

ACTUAL SIZE OF PAPER BAG

INFORMATION OF DIMENSION